

The medical professionals at University Health Services are passionate about student health and committed to helping students perform at their best. Many of our medical professionals hold board certifications in specialty areas of medicine such as gynecology, family practice and psychiatry. For detailed information on the services that University Health Services offers, visit [uhs.fsu.edu](http://uhs.fsu.edu).

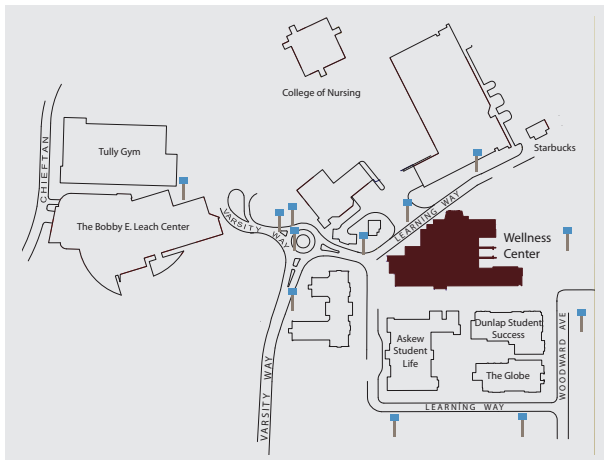
## Hours of Operation

Monday - Friday: 8 a.m. to 4 p.m.

Visit [uhs.fsu.edu](http://uhs.fsu.edu) or call (850) 644-6230 for information regarding holiday and semester break hours of operation.

## University Health Services is closed! What should I do?

If University Health Services is closed, there are several ways to receive care after hours.



## After Hours Care

In the case of a **life-threatening emergency**, dial 911 or head to the nearest Emergency room\* (see inside map for details).

For other after-hours healthcare needs, call or go to a walk-in clinic\* (listed below) or head to the nearest Urgent Care Center, such as TMH Urgent Care.

**Lake Ella** (near Publix)  
Open daily: 8 a.m. – 10 p.m.  
1690 North Monroe Street  
Tallahassee, FL 32303  
(850) 385-2222

**North Monroe Street**  
Mon. – Fri.: 8 a.m. – 6 p.m.  
3258 North Monroe St.  
Tallahassee, FL 32303  
(850) 562-2010

**Appleyard Drive**  
Mon. – Fri.: 8 a.m. – 6 p.m.  
505 Appleyard Drive  
Tallahassee, FL 32304  
(850) 576-8988

**Apalachee Parkway**  
Mon. – Fri.: 8 a.m. – 5 p.m.  
1160 Appalachee Parkway  
Tallahassee, FL 32301  
(850) 878-8843

**Kerry Forest Parkway**  
Mon. – Fri.: 8 a.m. – 8 p.m.  
Sat. – Sun.: 9 a.m. – 6 p.m.  
2907 Kerry Forest Parkway  
Tallahassee, FL 32309  
(850) 668-3380

**Mahan Drive**  
Mon. – Fri.: 8 a.m. – 8 p.m.  
Sat.: 8 a.m. – 6 p.m.  
1705 East Mahan Drive  
Tallahassee, FL 32308  
(850) 877-7164

**Raymond Diehl Road**  
Mon. – Fri.: 8 a.m. – 8 p.m.  
Sat: 9 a.m. – 6 p.m.  
3401 Capital Circle NE  
Tallahassee, FL 32308  
(850) 386-2266

\*The cost of care at an outside facility is not covered by the student health fee.



Florida State University  
Health & Wellness Center  
960 Learning Way  
Tallahassee, Florida 32306

Appointments  
Information  
TDD

[uhs.fsu.edu](http://uhs.fsu.edu)

(850) 644-4567  
(850) 644-6230  
(850) 644-2383

be well. do well.

# After Hours Care



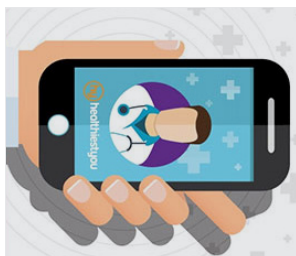




Did you know that as an FSU student you have 24/7 access to a licensed physician?



If you are traveling within the United States or are otherwise unable to visit University Health Services, HealthiestYou provides board-certified physicians. Using a computer or portable device, visit the HealthiestYou website ([telehelp4students.com](http://telehelp4students.com)) to learn more. An app is also available for your convenience.

HealthiestYou physicians can diagnose and treat most minor acute illnesses and prescribe medication if necessary. If you have the FSU student insurance plan (provided by United Health Care Student Resources), this service is covered (no out-of-pocket fees). If you don't have the student insurance plan, there is a \$40 fee for the service. Check with your insurance company to see if this service is reimbursable.



## VISIT A DOCTOR 24/7/365 OVER THE PHONE!

Our network of licensed doctors are standing by to help you with the press of a button. They can diagnose, treat, and often prescribe for an array of medical issues right over the phone, even from the comfort of your couch. Using HealthiestYou can save you tons of time and money!

Download the app and take charge today!  

## Tallahassee Area Hospitals

### Tallahassee Memorial HealthCare\*

1300 Miccosukee Rd.  
Tallahassee, FL 32308  
(850) 431-1155

#### Directions from Woodward Garage:

Head **north** on N. Woodward Ave. Turn **right** onto W. Tennessee St. Follow W Tennessee St. approximately 2.5 miles. Turn **left** onto N. Magnolia Dr. Make a slight **right** onto Doctors Dr. Take the first left onto Miccosukee Rd. Tallahassee Memorial HealthCare will be on your right.

### TMH Urgent Care\*

1541 Medical Dr.  
Tallahassee, FL 32308  
(850) 431-OUCH (6824)

#### Directions from Woodward Garage:

Head **north** on N. Woodward Ave. Turn **right** onto W. Tennessee St. Follow W. Tennessee St. approximately 2.5 miles. Turn **left** onto N. Magnolia Dr. Turn **right** onto Miccosukee Rd. Turn **left** onto Medical Dr. TMH Urgent Care will be on your right.

### Capital Regional Medical Center\*

2626 Capital Medical Blvd.  
Tallahassee, FL 32308  
(850) 325-5090

#### For ER wait times, visit

[capitalregionalmedicalcenter.com](http://capitalregionalmedicalcenter.com).

#### Directions from Woodward Garage:

Head **north** on N. Woodward Ave. Turn **right** onto W. Tennessee St. Follow W. Tennessee St. approximately 3 miles until it turns into Mahan Dr. Turn **left** onto Capital Circle NE. Turn **right** onto Capital Medical Blvd. Capital Regional Medical Center will be on your left.

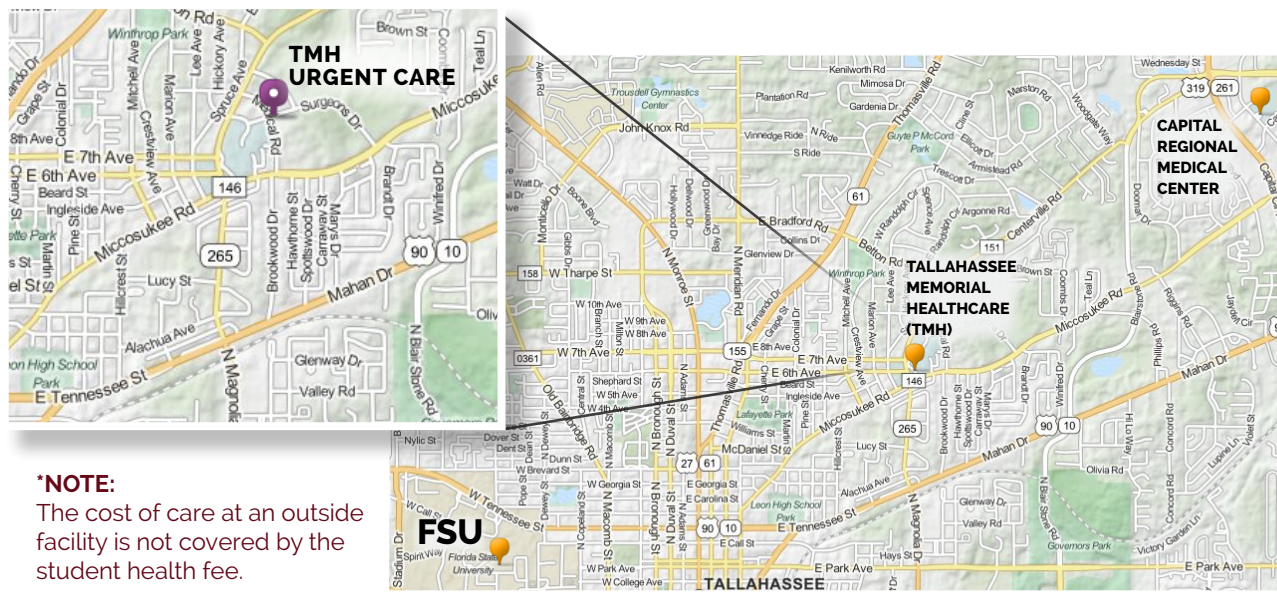
## Other Important Phone Numbers

**Florida Poison  
Information Center**  
1-800-222-1222

**Tallahassee Police  
Department  
(non-emergency)**  
(850) 891-4200

**Leon County Sheriff**  
(850) 922-3300

**Yellow Cab**  
(850) 580-8080



#### \*NOTE:

The cost of care at an outside facility is not covered by the student health fee.