

University Health Services

Orientation Presentation



Hours of Operation & Location

- **Monday through Friday**
- **Appointments available 8:00AM – 4:00PM**
 - Appointment-based system
 - Appointments can be scheduled online, by phone, or in-person
 - Staffing available until 5:00PM
- **Located at the Mary B. Coburn Health & Wellness Center**



Appointments available for:



Mental Health follow-ups



Routine follow-ups and Chronic medical care



Well and preventative physicals (athletic, band, women's annual exams)



Diagnostic Imaging (x-rays, ultrasounds)



Physical Therapy



Immunizations



Women's Care (full-service gyn care with the exception of OB care)



Allergy Injections



Virtual Services that are amendable to telemedicine



Lab Services

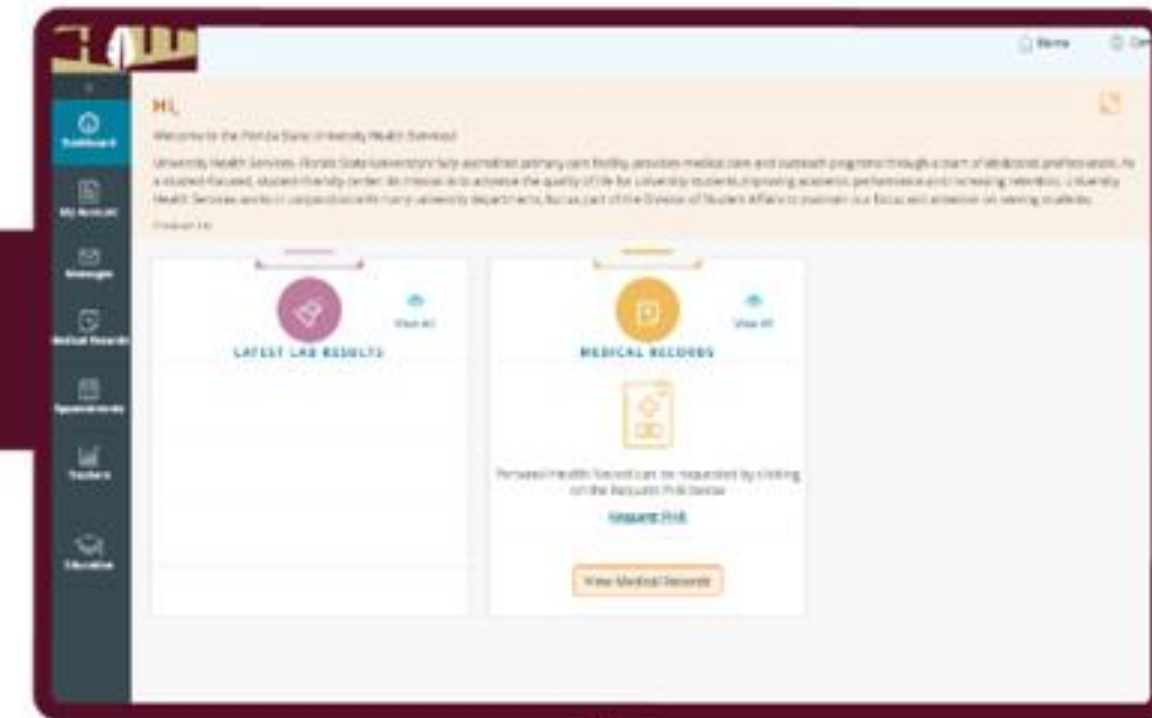
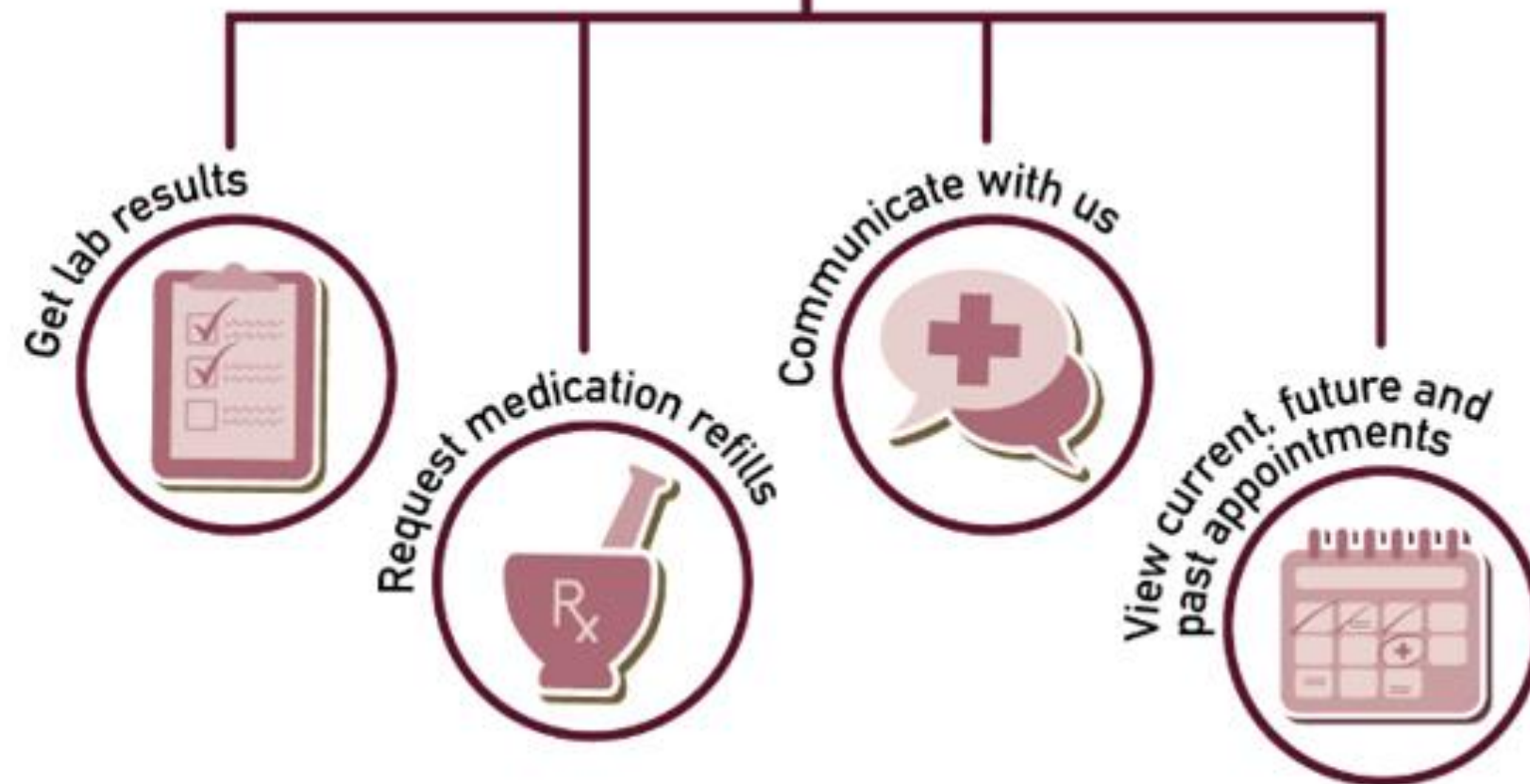


Medication Refills



Dental and Chiropractic Care

Returning Patients Can Access the **PATIENT PORTAL**



Online Scheduling



FSU

CENTER FOR HEALTH ADVOCACY & WELLNESS

UNIVERSITY HEALTH SERVICES

- Nutrition consultations
- HIV testing
- Smart Choices: Alcohol/drug harm reduction program
- Green Dot Bystander Intervention
- Health Noles Peer Education
- Power-based personal violence prevention



Other Services available in the Health & Wellness Center

Wellness Sport & Spine, Morgan Dental, and Quest are independent vendors of the university that provide services to the greater FSU community including students, faculty, and staff. These vendors are not part of University Health Services and, therefore, do not receive AAAHC accreditation.

If you have questions or are unsure about whether the vendors will accept your insurance, please call the office directly and they will be happy to assist you.



After-hours System of Care

uhs.fsu.edu/health-care/after-hours-care



Talk to a doctor or therapist by phone or video with HealthiestYou.

HealthiestYou provides 24/7 access to doctors and mental healthcare.

Download the App - iOS - Google Play

Call (855) 870-5858

**Other After-Hours Care
Options Include:**

Walk-in Clinics

Urgent Care

Emergency Room

Pharmacy

- No onsite pharmacy
- CVS located near campus (West Pensacola Street location)
- Several nearby pharmacy options available
- Some pharmacies offer specific reduced cost medications



Alphameds

487 E Tennessee St # 2, Tallahassee, FL 32301 (850) 942-1992

CVS

882 West Pensacola St, Tallahassee, FL 32304 (850) 841-1049
1819 West Tennessee Street, Tallahassee, FL 32304 (850) 576-0147
1708 North Monroe Street, Tallahassee, FL 32303 (850) 385-6136
1300 Apalachee Parkway, Tallahassee, FL 32301 (850) 877-5168
3035 Apalachee Parkway Tallahassee, FL 32301 (850) 402-4046

Publix

1700 North Monroe St # 852, Tallahassee, FL 32303 (850) 222-1975
101 North Blairstone Road # 101, Tallahassee, FL 32301 (850) 219-6211
800 Ocala Road # 200, Tallahassee, FL 32304 (850) 575-6997

Target

2120 Apalachee Parkway Tallahassee, FL 32301 (850) 671-2041

Walgreens

2009 W Tennessee Street, Tallahassee, FL 32304 (850) 580-1899
414 South Magnolia Drive Tallahassee, FL 32301 (850) 877-3023

Walmart

4400 West Tennessee Street, Tallahassee, FL 32304 (850) 574-4613
3535 Apalachee Pkwy Tallahassee, FL 32311 (850) 656-4593
3221 N Monroe St Tallahassee, FL 32303 (850) 562-2829

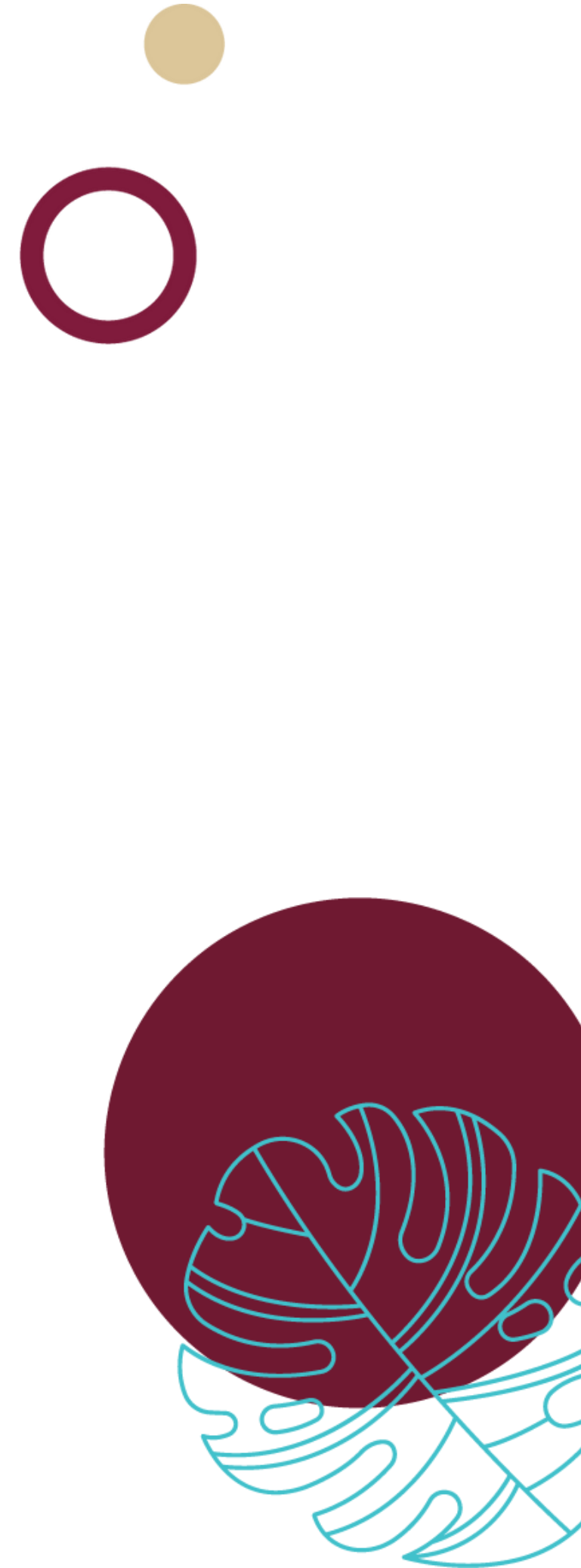
Publix offers reduced cost medications*

Walmart offers \$4 prescriptions*

*select medications

Insurance & Billing

- The student health fee allows us to provide many free services to students.
- Co-pay not collected
- All visits, procedures, labs, diagnostic imaging & specialty visits will be billed to insurance carrier
- Outstanding balances post to student account



Insurance & Billing

- In-network with a variety of different insurance plans
- University-sponsored insurance available (United Healthcare Student Resources)
- Premium deductible can be paid through financial aid
- Insurance coverage is a requirement at FSU for all full time students and International students
- PPO vs HMO
- ER care is for true emergencies and not a substitute for primary or specialty healthcare services



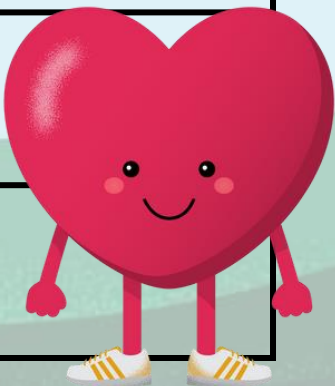
Insurance & Billing

In-Network Insurance Plans

- Florida Blue (formerly Blue Cross Blue Shield)
- Network Blue/Blue Options
- Blue Choice/PPO
- Traditional
- Aetna
- PPO
- Managed Choice
- HMO
- POS & EPO
- United HealthCare (Student Resources)
- FSU Sponsored Health Plan
- In-network for all services
- United HealthCare
- Choice Plus
- PPO & POS
- *<https://www.uhcsr.com/glossary>
- CIGNA
- PPO
- OAP (Open Access Plus)
- Humana
- PPO
- POS
- EPO
- Choice Care Network
- Tricare
- Select
- Prime (Out-of-Network, Referral from your PCM is required)
- Medicaid (Humana)
- Healthy Horizons
- Capital Health Plan (CHP) (Out-of-Network for Physical Therapy)
- United Behavioral Health

University Health Services Student Insurance Rates 2024/2025

	Domestic Student	International Student
Annual: Aug. 15 – Aug. 14	\$3,086	\$3,135
Fall: Aug. 15 – Dec. 31	\$1,175	\$1,194
Spring/Summer: Jan. 1 – Aug. 14	\$1,911	\$1,941
*Summer: May 10 – Aug. 14	\$830	\$833



studentinsurance.fsu.edu

Get Involved

UHS offers several ways for students to become involved.

To learn more, visit uhs.fsu.edu/getinvolved





uhs.fsu.edu

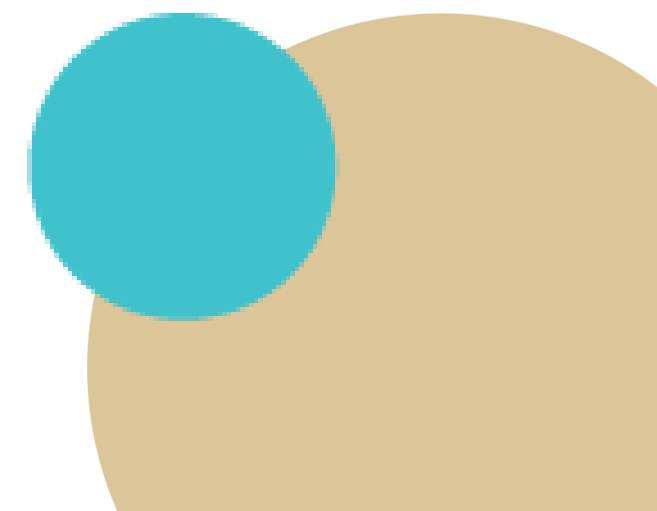


@FSUHealth_Services



@fsu_health

**Find us on
myFSU Mobile**



The image shows a large, multi-story brick building with a prominent set of wide concrete stairs leading up to an entrance. The entrance is labeled "WELLNESS" in a light-colored font above the doorway. The building has a modern architectural style with large windows and a mix of brick and stone-like concrete panels. The stairs are flanked by metal railings and have a warm, glowing light strip along the right side. The sky is a clear, pale blue, suggesting dusk or dawn. The overall atmosphere is clean and professional.

Thank you!

FSU

**UNIVERSITY
HEALTH SERVICES**
DIVISION OF STUDENT AFFAIRS